

## Technical Bulletin

EU18-2023 | 21<sup>st</sup> December 2023

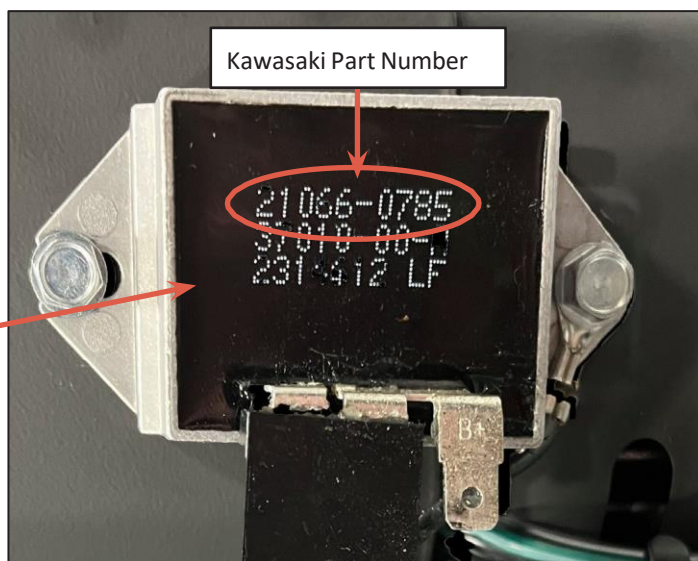
### Stop Sale / Stop Usage Notice – Consumer Information

#### Detail

It has been determined that a product safety hazard may exist with the 21066-0785 voltage regulator on selected Kawasaki general purpose engines. Machines with engines from the Eligible Engine Table below must **not be used**, until further notice. The negative battery cable of these units **must be disconnected** and secured to prevent accidental contact with the negative battery terminal, until further notice.

#### NOTE

The below engine photo is for reference only and may not reflect the engine on your machine.



#### Kawasaki Action

A consumer corrective action plan will be published in the near future.

## Eligible Engines

Units within the engine serial number ranges listed in “Eligible Engine Table,” are covered by this notice. The “Eligible Engine Table” list the engine model, specification number, and serial number range for eligible units.



Eligible Engine Table		
Model Number	Specification Number	Engine Serial Number Range
FH601D	HS01	FH601DA59614 - FH601DA64303
FH680D	JS01	FH680DA48650 - FH680DA52522
FH721D	KS01	FH721DA64847 - FH721DA67608
FH770D	HS01	FH770DA21067 - FH770DA21740
FR730V	GS04	FR730VF13797
FS541V	GS53	FS541VB49625 - FS541VB50751
	AS56	FS541VB51588 - FS541VB71513
FS600V	BS29	FS600VF26474 - FS600VF41935
	AS33	FS600VF32442 - FS600VF32442
FS651V	JS00	FS651VC59102
	BS22	FS651VC43539 - FS651VC62166
	CS22	FS651VC63543 - FS651VC71453
	CS52	FS651VC43987 - FS651VC63434
	DS52	FS651VC64027 - FS651VC74684
	AS53	FS651VC69578 - FS651VC73568
FS691V	JS00	FS691VA90301
	FS51	FS691VA81404 - FS691VA89792
	GS51	FS691VA95396 - FS691VA98179
	AS53	FS691VA95036 - FS691VA97307

Eligible Engine Table Continued		
Model Number	Specification Number	Engine Serial Number Range
FS730V	AS26	FS730VD80844 - FS730VD97748
FT730V	AS00	FT730VA39046 - FT730VA39046
	AS10	FT730VA73465 - FT730VA94781
	AS11	FT730VA45082 - FT730VA63539
	BS11	FT730VA66338 - FT730VA75890
FX481V	DS10	FX481VA08782 - FX481VA10825
FX600V	AS18	FX600VA60789 - FX600VA72323
	BS18	FX600VA73896 - FX600VA81467
FX691V	FS18	FX691VB93253 - FX691VC20877
	GS18	FX691VC24310 - FX691VC43195
	CS50	FX691VB97488 - FX691VC08451
		FX691VC12100 - FX691VC12103
	DS50	FX691VC13052 - FX691VC19485
	ES50	FX691VC20566 - FX691VC38540
FX730V	AR05	FX730VC89535 - FX730VC89630
	BR05	FX730VC98399 - FX730VD06568
	CR05	FX730VD52720 - FX730VD82294
	KS05	FX730VC82133 - FX730VD82484
	FS17	FX730VC79325 - FX730VD37632
	GS17	FX730VD38859 - FX730VD84856

Model Number	Specification Number	Engine Serial Number Range
FX751V	LS00	FX751VA76686 - FX751VA77769
	MS00	FX751VA77914 - FX751VA83505
	MS07	FX751VA76614 - FX751VA77501
	NS07	FX751VA78706 - FX751VA82665
	ES11	FX751VA76602 - FX751VA78129
	FS11	FX751VA78262 - FX751VA83577
FX801V	LS00	FX801VC22760 - FX801VC31703
	MS00	FX801VC35884 - FX801VD07353
	MS04	FX801VC22556 - FX801VC37355
	NS04	FX801VC37718 - FX801VD01983
	PS04	FX801VD04601 - FX801VD08181
	JS07	FX801VC22412 - FX801VC22507
	KS07	FX801VC52610 - FX801VC63050
	KS08	FX801VC22508 - FX801VC32963
	LS08	FX801VC33077 - FX801VC41819
	MS08	FX801VC45024 - FX801VD00605
	HS09	FX801VC24176 - FX801VC32184
	JS09	FX801VC33396 - FX801VC87617
	FS12	FX801VC33024 - FX801VC35258
	GS12	FX801VC47702 - FX801VC91951
	GS13	FX801VC23432 - FX801VC36839
	HS13	FX801VC37541 - FX801VD07689
	GS15	FX801VC42240 - FX801VD06257
	ES18	FX801VC24080 - FX801VC36004
	FS18	FX801VC48229 - FX801VD07953
	ES19	FX801VC22544 - FX801VC36472
	FS19	FX801VC37356 - FX801VD08346
	CS21	FX801VC26384 - FX801VC26395
	DS21	FX801VC40142 - FX801VC76549
	DS22	FX801VC26264 - FX801VC32172
	ES22	FX801VC37440 - FX801VC90233
	CS25	FX801VC24056 - FX801VC35723
	DS25	FX801VC45660 - FX801VD02295
	AS27	FX801VC23012 - FX801VC32399
	BS27	FX801VC32964 - FX801VC79145
	AS28	FX801VC85506 - FX801VC85589
	AS29	FX801VD02524 - FX801VD06785

Eligible Engine Table Continued		
Model Number	Specification Number	Engine Serial Number Range
FX850V	LS00	FX850VC06916 - FX850VC13391
	MS00	FX850VC13824 - FX850VC83539
	HS07	FX850VC04818 - FX850VC17489
	JS07	FX850VC18328 - FX850VC49400
	LS10	FX850VC34160 - FX850VC69461
	HS11	FX850VC06484 - FX850VC17768
	JS11	FX850VC20306 - FX850VC75059
	FS15	FX850VC06256 - FX850VC17585
	GS15	FX850VC23703 - FX850VC83334
	GS18	FX850VC48957 - FX850VC58444
	HS18	FX850VC66502 - FX850VC66561
	GS22	FX850VC15741 - FX850VC22849
	ES24	FX850VC04794 - FX850VC12089
	FS24	FX850VC13812 - FX850VC22909
	GS24	FX850VC25681 - FX850VC43509
	DS25	FX850VC04686 - FX850VC14762
	ES25	FX850VC18292 - FX850VC83716
	DS26	FX850VC04902 - FX850VC12971
	ES26	FX850VC15718 - FX850VC75466
	DS27	FX850VC12402 - FX850VC13415
	ES27	FX850VC30327 - FX850VC76995
	BS29	FX850VC09197 - FX850VC17393
	CS29	FX850VC20310 - FX850VC26083
	AS33	FX850VC12498 - FX850VC16347
	BS33	FX850VC26143 - FX850VC70531
	AS34	FX850VC39182 - FX850VC58299
	AS35	FX850VC19455 - FX850VC73994
	AS37	FX850VC81247 - FX850VC81963

Eligible Engine Table Continued		
Model Number	Specification Number	Engine Serial Number Range
FX921V	JS00	FX921VA83898 - FX921VB18614
	GS04	FX921VA79590 - FX921VA84785
	HS04	FX921VA85482 - FX921VB21614
	GS06	FX921VA79830 - FX921VA84413
	HS06	FX921VA85842 - FX921VB22454
	HS07	FX921VA90138 - FX921VB22118
	CS09	FX921VA79686 - FX921VA85481
	DS09	FX921VA86730 - FX921VB22610
	ES11	FX921VA79542 - FX921VA94505
	CS13	FX921VA82422 - FX921VA84557
	DS13	FX921VA87812 - FX921VB22550
	DS15	FX921VA80634 - FX921VA84581
	CS17	FX921VA87692 - FX921VB07958
	BS18	FX921VA83430 - FX921VA84833
	CS18	FX921VA88314 - FX921VB19298
	BS19	FX921VB09771 - FX921VB09818
	BS20	FX921VA86622 - FX921VB09014
	AS22	FX921VA79962 - FX921VB19466
AS23	FX921VB07107 - FX921VB14570	

Eligible Engine Table Continued		
Model Number	Specification Number	Engine Serial Number Range
FX1000V FXT00V	JS00	FXT00VA91491 - FXT00VB66650
	CS15	FXT00VA91683 - FXT00VB06369
	DS15	FXT00VB07678 - FXT00VB35815
	ES16	FXT00VA95938 - FXT00VB26994
	FS16	FXT00VB31812 - FXT00VB47701
	ES18	FXT00VB39351 - FXT00VB66874
	CS19	FXT00VA92345 - FXT00VB04544
	DS19	FXT00VB09617 - FXT00VB64475
	DS22	FXT00VA91731 - FXT00VB41301
	AS25	FXT00VA91503 - FXT00VB07293
	BS25	FXT00VB08961 - FXT00VB70067
	CS24	FXT00VB10312 - FXT00VB59275
	AS28	FXT00VA92621 - FXT00VB07377
	BS28	FXT00VB08817 - FXT00VB21140
	AS30	FXT00VA96370 - FXT00VB07413
	BS30	FXT00VB13956 - FXT00VB66826
	BS31	FXT00VA91647 - FXT00VB60919
	AS32	FXT00VA92681 - FXT00VB67380
AS33	FXT00VB04053 - FXT00VB69767	
AS36	FXT00VB67441 - FXT00VB69731	

## Required Action

Immediately stop using the machine, disconnect the negative battery cable from the battery, and secure it away from the battery to prevent accidental contact with the negative battery terminal.

## Negative Battery Cable Disconnect Procedure

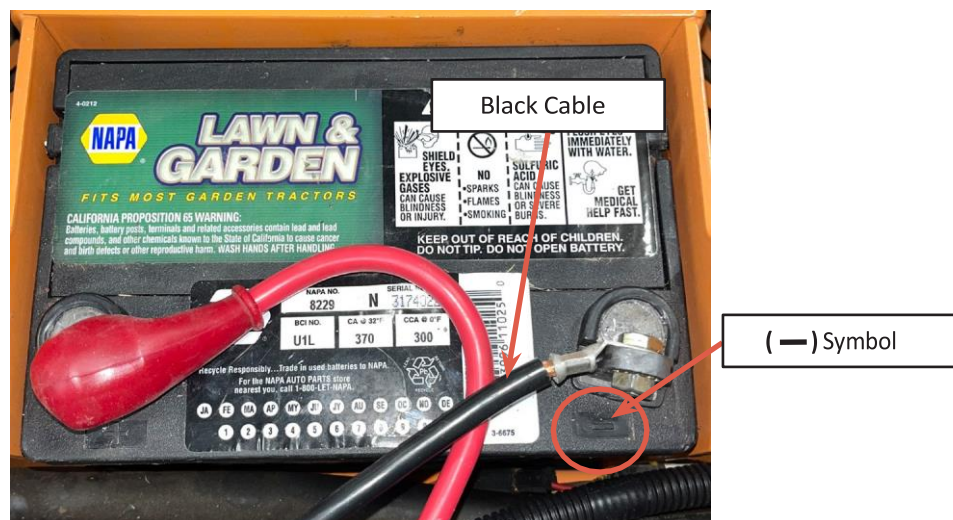
### NOTE

The following procedural photos may not reflect your actual machine. They are for reference only.

1. Confirm eligible engine model, engine specification, and engine serial number by matching them to "Eligible Engines Table".



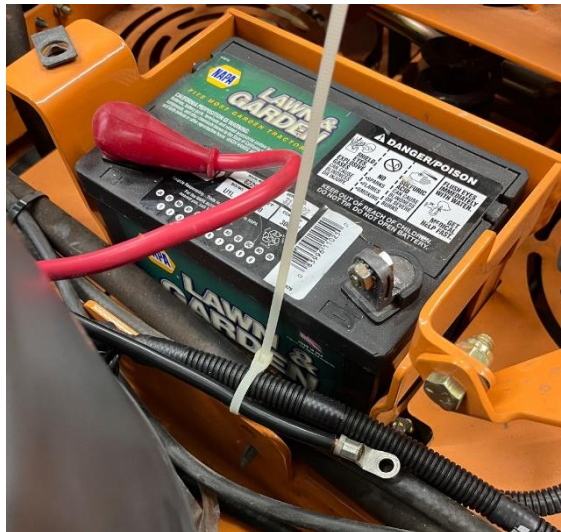
2. Verify the ignition key is in the OFF position.
3. Locate the machine battery. See the machine's Owner Manual for location or contact your machine's dealer for more information.
4. Locate the negative battery post on the battery.



- Using the appropriate tools, remove the retaining hardware and keep for installation later.



- Remove the negative battery cable and secure it in a location where it cannot accidentally contact the negative battery terminal.
  - Install a Zip Tie or similar retaining hardware.



## Help

If you need help:

If you have any questions, please find your nearest Kawasaki Engine Dealer via the Kawasaki-engines website ([www.kawasaki-engines.eu](http://www.kawasaki-engines.eu)), during normal business hours. [Find A Kawasaki Dealer | Kawasaki Engines \(kawasaki-engines.eu\)](#)

We are sorry for any inconvenience this may cause, but we have taken this action in the interest of your safety and your continued satisfaction with your Kawasaki engine.

Kawasaki Motors Europe N.V. - Engine Department